



## SPC USB Input Datasheet

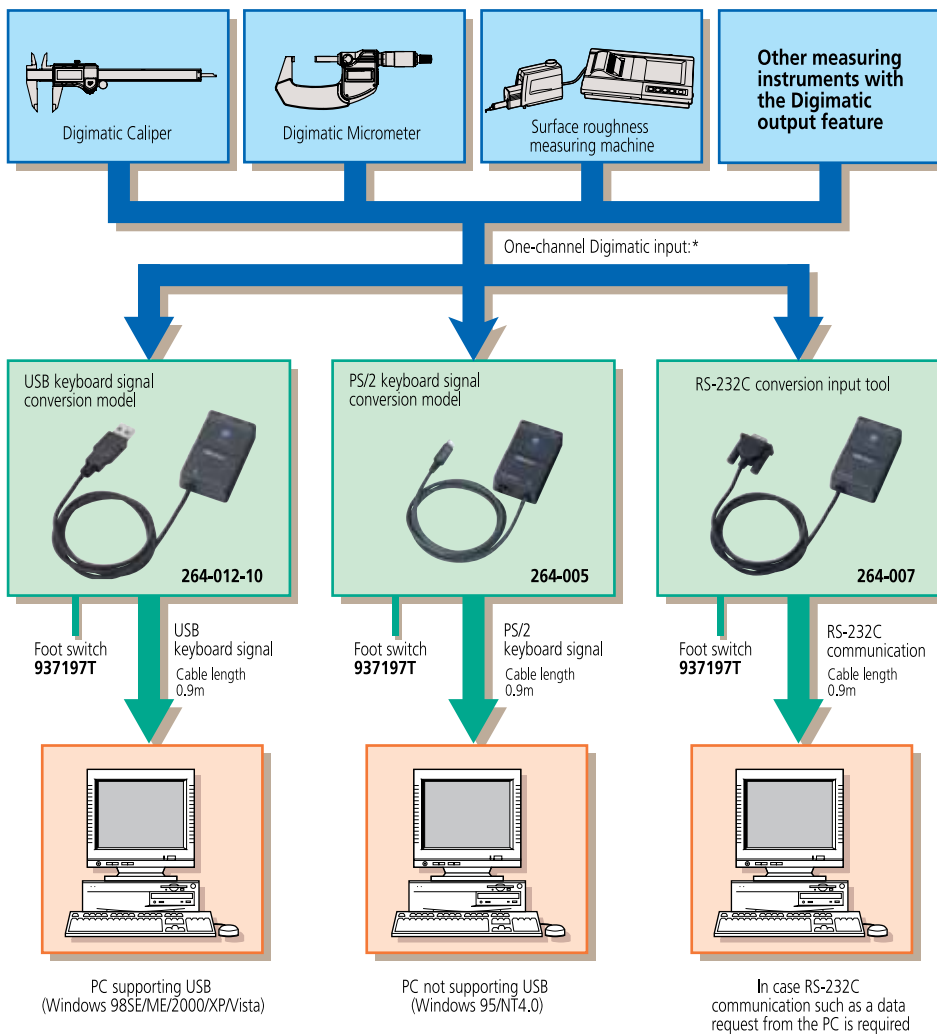
USB Input Tool Direct: USB-ITN  
SERIES 254 - Digimatic Gauge / PC Data Input Device

- The input tool is an interface that converts measurement data to keyboard signals for sending to a PC, enabling you to easily input data from Mitutoyo measuring instrument, equipped with digimatic output, directly to cells in off-the-shelf spreadsheet software such as Excel.
- USB (MIT-264-012-10 shown opposite), RS-232C and PS/2 versions are available to cater for the various PC input requirements.
- Measurements can be made even more conveniently by using the optional foot (MIT-937179T) switch instead of the data switch on the instrument.



## Connection Configuration

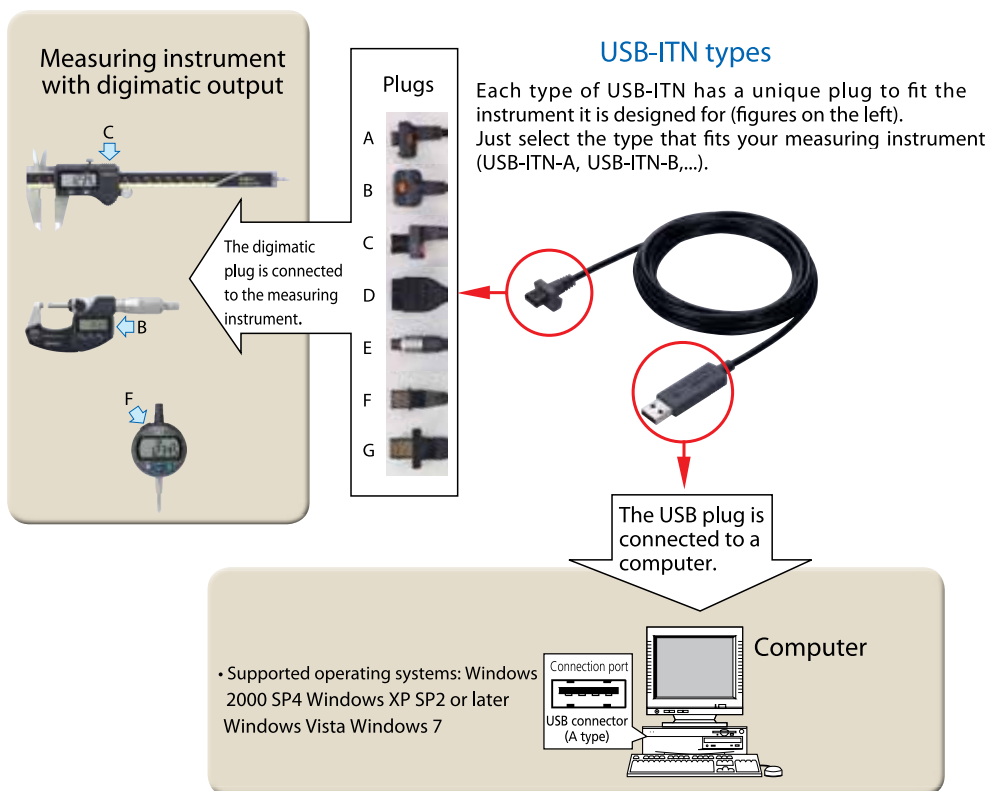
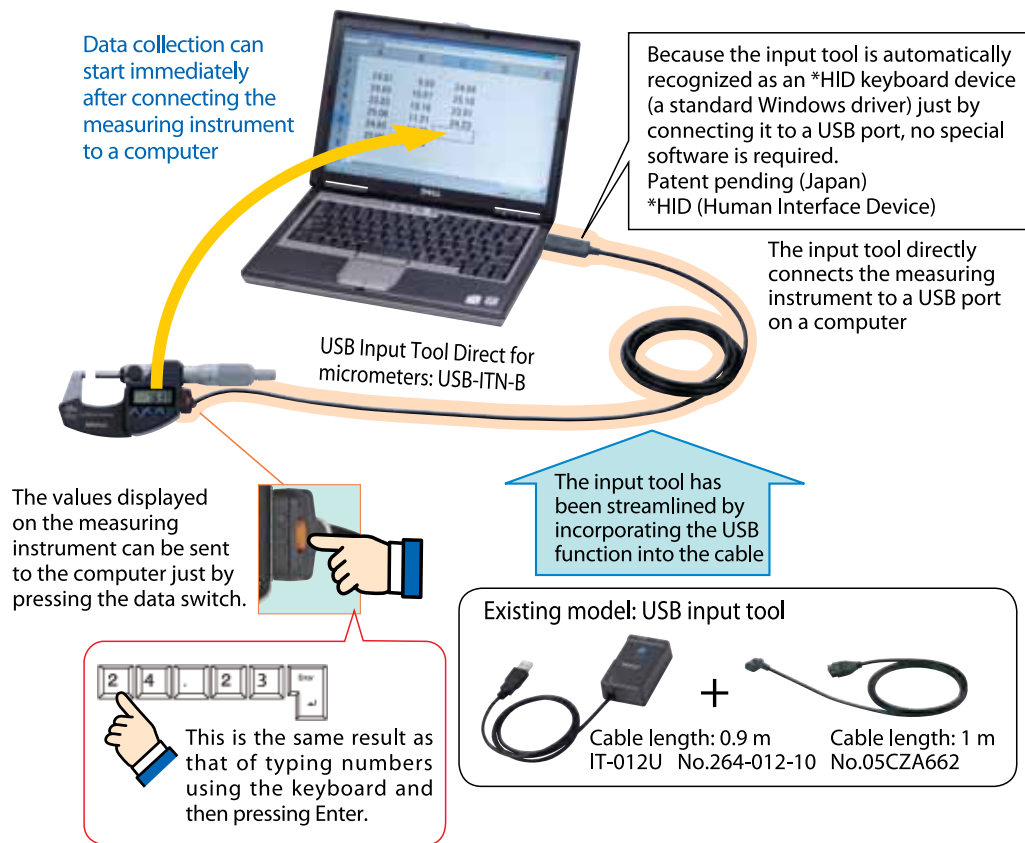
### Connection Configuration





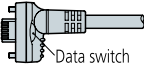
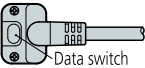
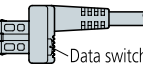
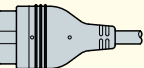

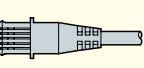
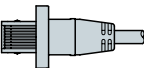







## USB Input Tool Direct

- Our USB Input Tool direct has been streamlined into a range of dedicated models for each type of measuring instrument.
- In the same way as the existing model, IT-012U, measurement can be input to Excel, Notepad, and other programs just by connecting the input tool to a computer.





## SPC Connecting Cables

Cable type	A Water-proof with switch	B Water-proof with switch	C With switch	D 10-pin plain	E 6-pin round	F Straight type	G Water-proof raight type
Illustration of the plug that connects to the measuring instrument							
Socket type on the measuring instrument							
Codes of major compatible measuring instruments	[Digimatic Caliper /Super Caliper] [Digimatic Carbon Fiber Caliper] [Digimatic Depth Gauge] [Digimatic Scale Unit] [Digimatic Exclusive Caliper]	[Digimatic Micrometer, QuantuMike] [Tubular Inside Micrometer] [Digimatic Micrometer Head] [Digimatic Exclusive Micrometer] [Digimatic Holtest]	[Digimatic Micrometer Head] [Digimatic Caliper] [Digimatic Depth Gauge] [Digimatic Scale Unit] [Digimatic Exclusive Caliper] The end of the mark is -CX/C	Measuring instrument models that incorporate a data switch			
				[Surface Roughness Tester] SJ-210/301/400 [Coating Thickness Gauge] [Linear Height] [Reference Gauge] [Digimatic Indicator] [Laser Scan Micrometer] [μ-checker] (Using the foot switch)	[Digimatic Micrometer] [Tubular Inside Micrometer] [Digimatic Holtest] [Reference Gauge] [Borematic] [Hardness Testing Machines]	[Digimatic Height Gauge] [Digimatic Caliper] [Digimatic Bore Gauge] [Digimatic Indicator] [Digimatic Depth Gauge/ Digimatic Thickness Gauge] Digimatic model (ID-CX) [Digimatic Carbon Fiber Caliper] [Digimatic Scale Unit] [Portable Hardness Testing Instruments]	[Digimatic Indicator]
				Measuring instrument models that do not have a data switch			
				[Digimatic Indicator] [Linear Gauge/Counter] EC/EB Counter	No corresponding models	[Digimatic Indicator] [Digimatic Depth Gauge/ Digimatic Thickness Gauge] Digimatic model (ID-C)	No corresponding models

